

# WISCONSIN PRESERVES WHERE OPDMDs ARE PERMITTED WITH SOME RESTRICTIONS

## Contents

CEDARBURG BOG .....	1
CENTRAL SANDS .....	2
DOOR PENINSULA .....	2
MILITARY RIDGE PRAIRIE HERITAGE AREA.....	2
MUKWONAGO RIVER WATERSHED.....	3
NORTHERN WISCONSIN.....	3
MAPS .....	5
Barneveld Prairie Map .....	5
Bass Lake Map.....	6
Catherine Wolter Wilderness Area Map.....	7
Caroline Lake Map .....	8
Cedarburg Bog Map.....	9
Crooked Creek Map.....	10
Kangaroo Lake Map .....	11
Lulu Lake Map .....	12
Newell and Ann Meyer Nature Preserve Map .....	13
Mink River Map .....	14
Page Creek Marsh Map.....	15
Pickerel Lake Fen Map .....	16
Summertown Bog Map.....	17
Thomson Memorial Prairie Map .....	18

## CEDARBURG BOG, Ozaukee County ([Cedarburg Bog Map](#))

- Use is permitted on all roads where motorized vehicles are permitted.
- Many of these are grassed lanes or two-track dirt roads, but not all OPDMDs would work on some portions of the roads.

## CENTRAL SANDS

### Page Creek Marsh ([Page Creek Map](#))

- OPDMDs shall be permitted on the existing established road that starts at N3444 on Hwy K and goes to into the preserve.
- OPDMDs are prohibited on temporary fire breaks and foot trails.
- The preserve gate is locked with a combination lock. ADA visitors who would like access may call the local project office, 608-251-8140, during regular business hours to request the combination of the gate.

### Summerton Bog ([Summerton Bog Map](#))

- OPDMD use is prohibited except for the short stretch of land that runs with the Gas company Right of Way.
- OPDMDs may use this short stretch, but it is only a few hundred yards before the property boundary. It would afford a hunting opportunity for an ADA user.

## DOOR PENINSULA

### Kangaroo Lake ([Kangaroo Lake Map](#))

- Allow OPDMDs up to three feet wide on the identified trail off of Highland Road at the Judy Abert Meissner Memorial Wetland Preserve.
- If trail conditions are such that rutting or soil disturbance might occur, operator will refrain from use until conditions improve.

### Mink River Estuary ([Mink River Map](#))

- Allow OPDMDs up to 5 feet wide on the trail from the east parking lot to the river and from the Juice Mill entrance to the research station.
- A maximum speed of 5mph must be adhered to.
- If trail conditions are such that rutting or soil disturbance might occur, operator will refrain from use until conditions improve.
- ADA visitors who would like access may call the local project office, 920-743-8695, during regular business hours to request the gate lock combination, which changes periodically.

## MILITARY RIDGE PRAIRIE HERITAGE AREA

### Barneveld Prairie ([Barneveld Prairie Map](#))

- ATVs and UTVs are allowed on established farm lanes and maintained mowed path per map.
- If road conditions are such that damage or rutting will occur, operator will refrain from use until conditions improve.

### Thomson Memorial Prairie ([Thomson Memorial Prairie Map](#))

- ATVs and UTVs are allowed on established farm lanes and maintained mowed path per map.
- If road conditions are such that damage or rutting will occur, operator will refrain from use until conditions improve.

## MUKWONAGO RIVER WATERSHED

### Crooked Creek Preserve ([Crooked Creek Map](#))

- OPDMDs shall be permitted on the main, gravel driveway.
- The trails drop steeply beyond the gravel driveway and are inaccessible to OPDMDs.
- ADA visitors who would like access may call the local project office, 262-642-7276, during regular business hours to request the combination of the gate and also condition of the trails.

### Lulu Lake Preserve ([Lulu Lake Map](#))

- At the southern unit OPDMDs shall be permitted on the existing gravel road that starts at the preserve entrance on Nature Road and goes to the Mukwonago River lookout and to the lake. ADA visitors who would like access may call the local project office, 262-642-7276, during regular business hours to request the combination of the gate, which changes monthly, and also condition of the trails.
- At the northern unit, OPDMDs shall be permitted on the existing paved road that starts at the preserve entrance on Highway LO and goes to the turnaround inside the preserve.
- OPDMDs are prohibited on other maintenance roads, fire breaks, and foot trails.

### Newell and Ann Meyer Nature Preserve ([Newell and Ann Meyer Nature Preserve Map](#))

- OPDMDs shall be permitted on the preserve driveway and established trails (the marked Priebe Family trail). Vehicles may drive on the driveway up to the buildings.
- OPDMDs are prohibited off the identified trails.
- On the trails, OPDMDs will be restricted to a maximum width of a standard ATV.
- ADA visitors who would like access may call the local project office, 262-642-7276, during regular business hours to request the combination of the gate and also condition of the trails.

### Pickereel Lake Fen Preserve ([Pickereel Lake Fen Map](#))

- OPDMDs shall be permitted on existing gravel roads at the preserve.
- Conditions must be dry on the roads so as to not cause damage to roads.
- ADA visitors who would like access may call the local project office, 262-642-7276, during regular business hours to request the combination of the gate and also condition of the trails.

## NORTHERN WISCONSIN

### Bass Lake ([Bass Lake Map](#))

- OPDMDs may be used on the established forest woods road but not on foot trails or undeveloped areas of the property.

### Caroline Lake ([Caroline Lake Map](#))

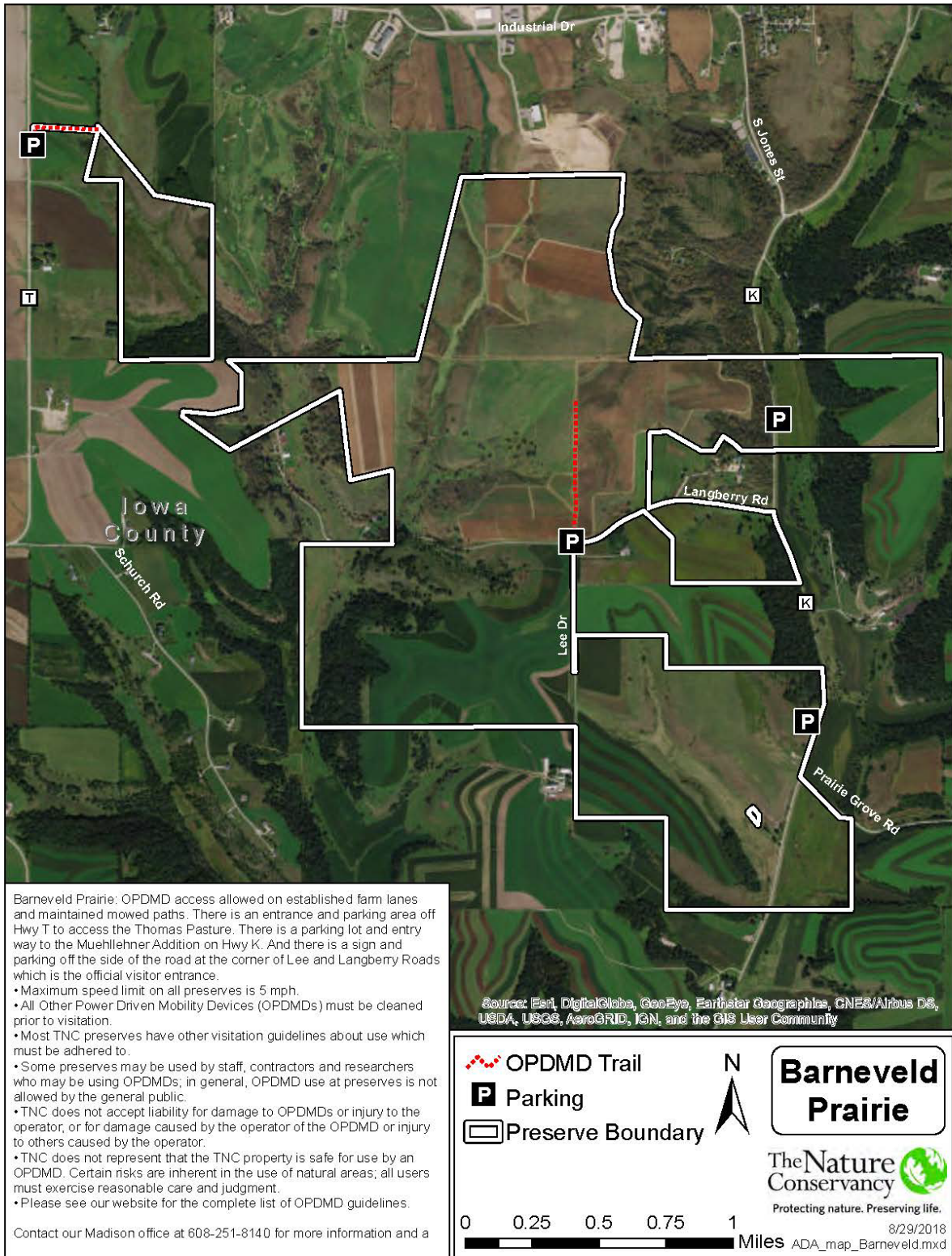
- OPDMDs shall be permitted on the public Caroline Lake Road, which goes through the property, and on Caroline Lake.
- Use of OPDMDs is prohibited on all trails and interior of preserve due to safety and environmental impacts of OPDMDs.

Catherine Wolter Wilderness Area ([Catherine Wolter Wilderness Area Map](#))

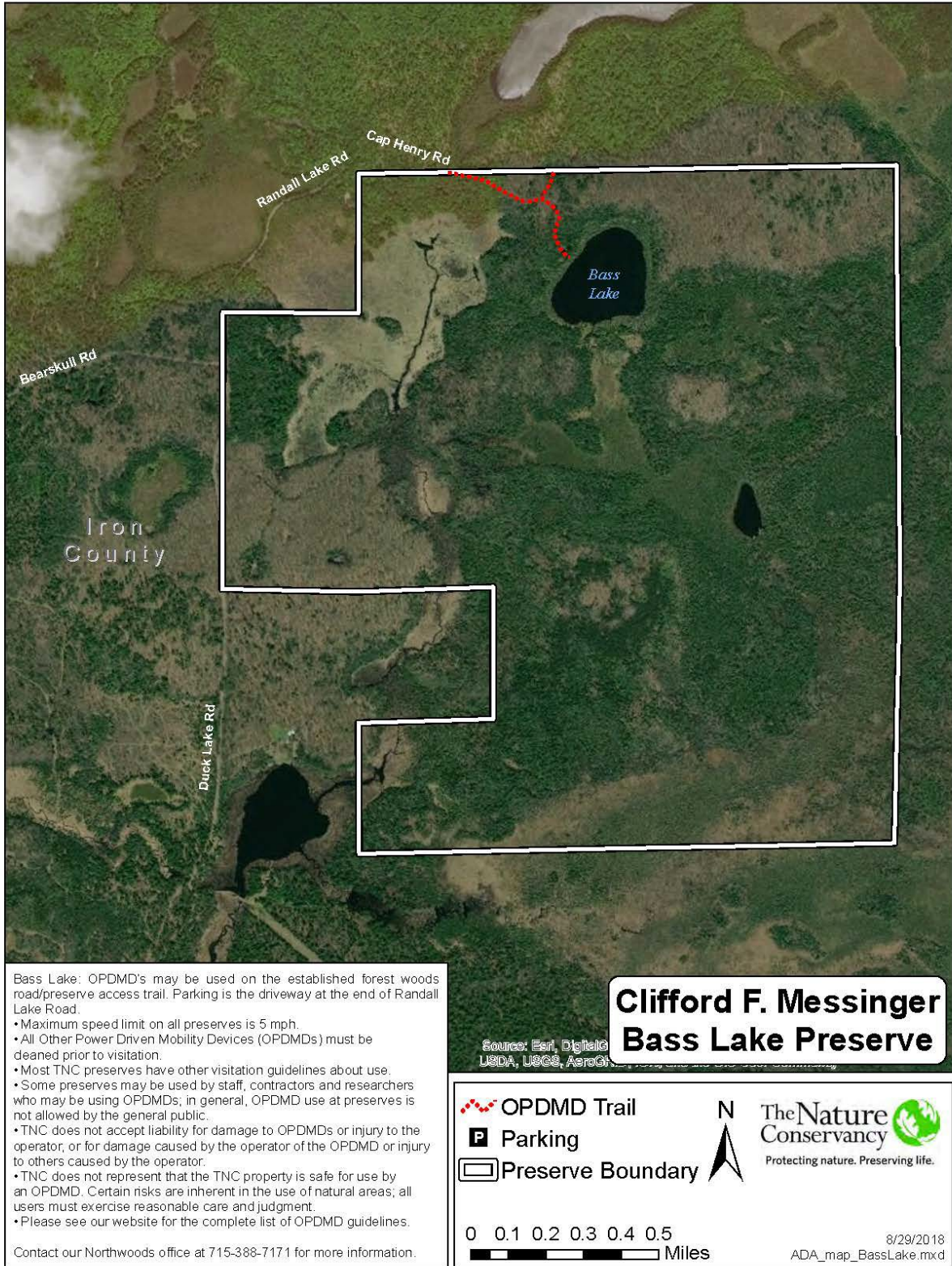
- OPDMD use is allowed on established old logging roads but prohibited in the undeveloped areas.
- The parking lot has a gated combination lock at the trail head. ADA visitors who would like access may call the local project office, 715-358-6305, during regular business hours to obtain the gate combination.

# MAPS

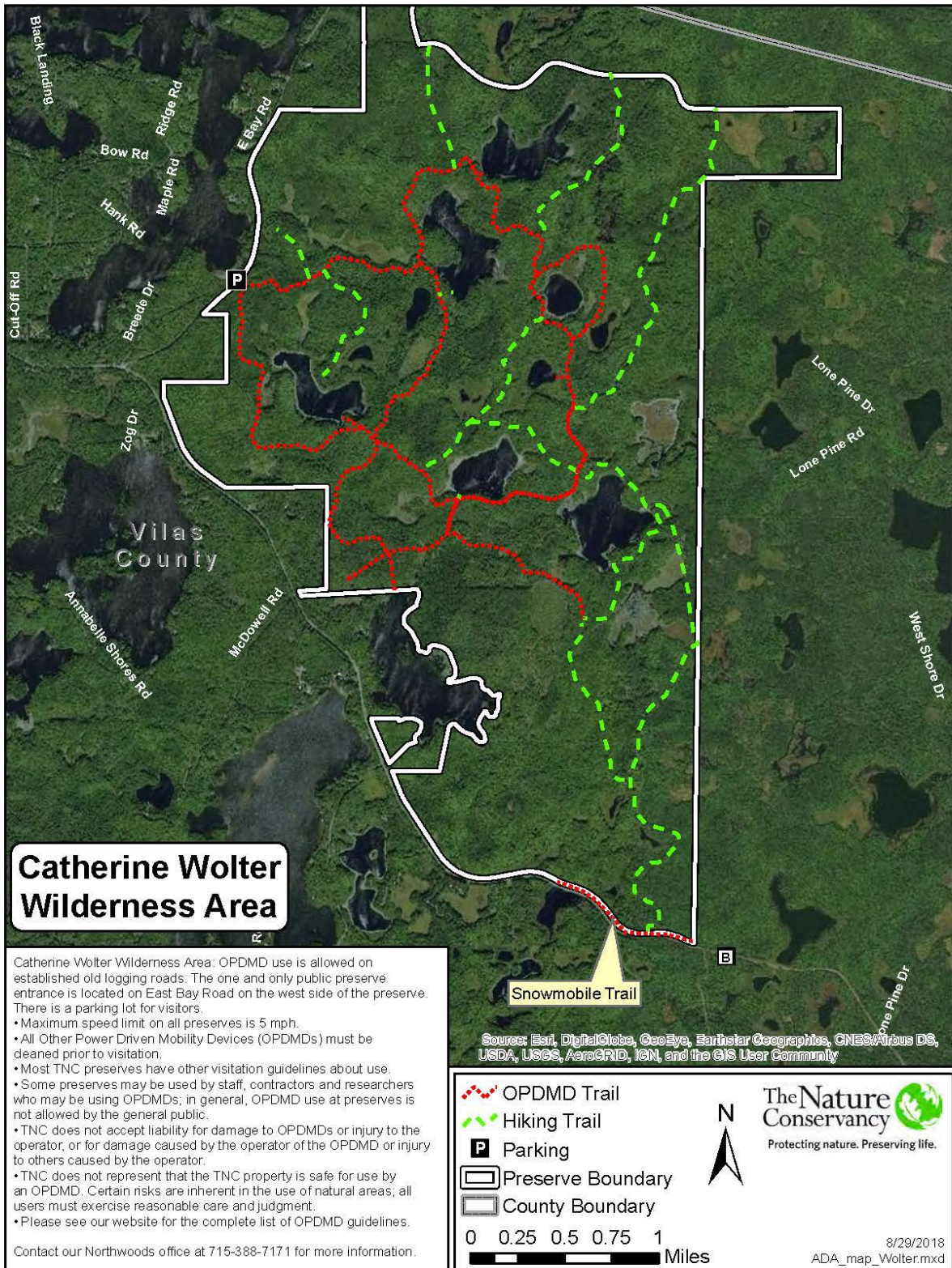
## Barneveld Prairie Map



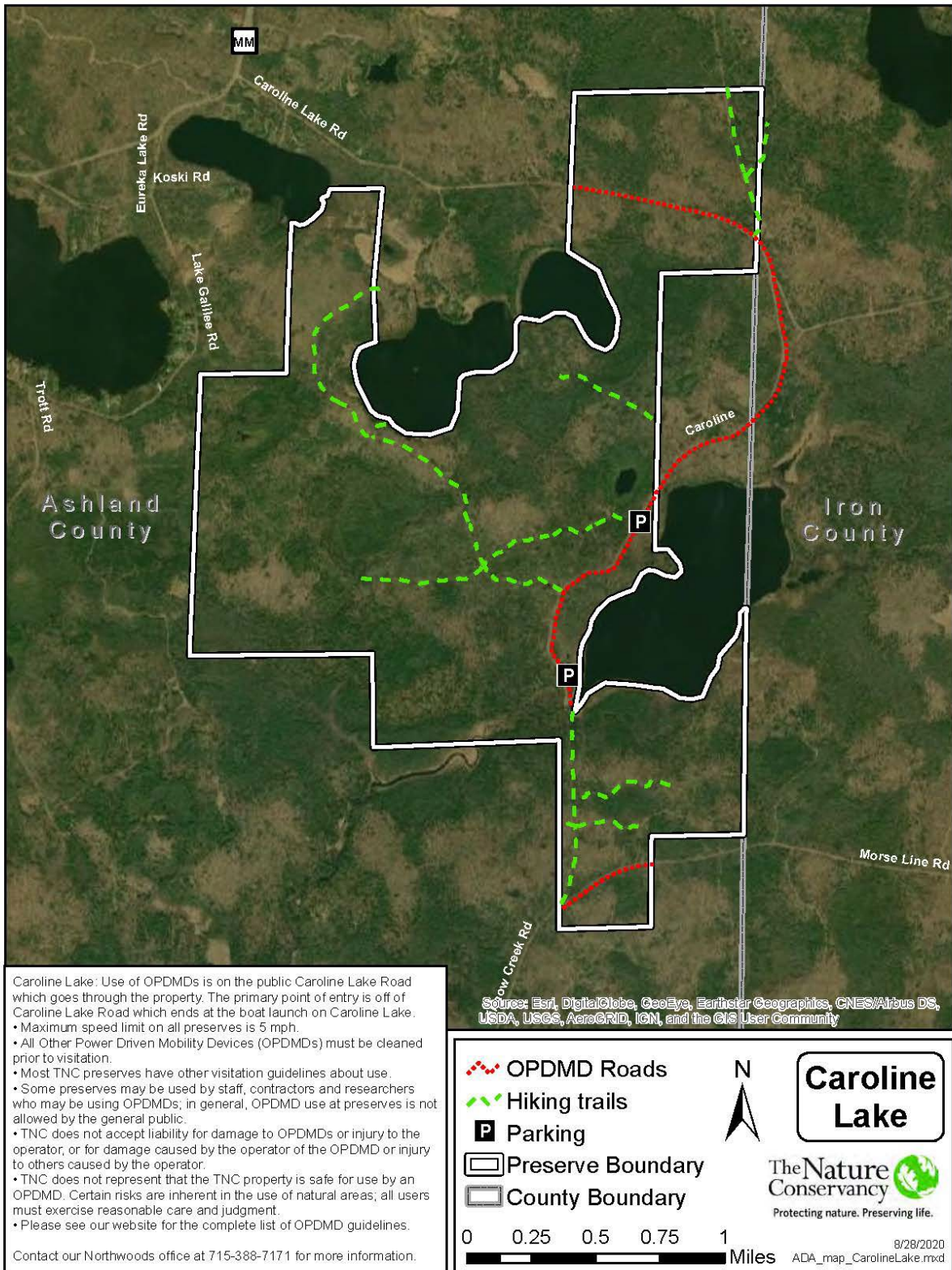
# Bass Lake Map



# Catherine Wolter Wilderness Area Map

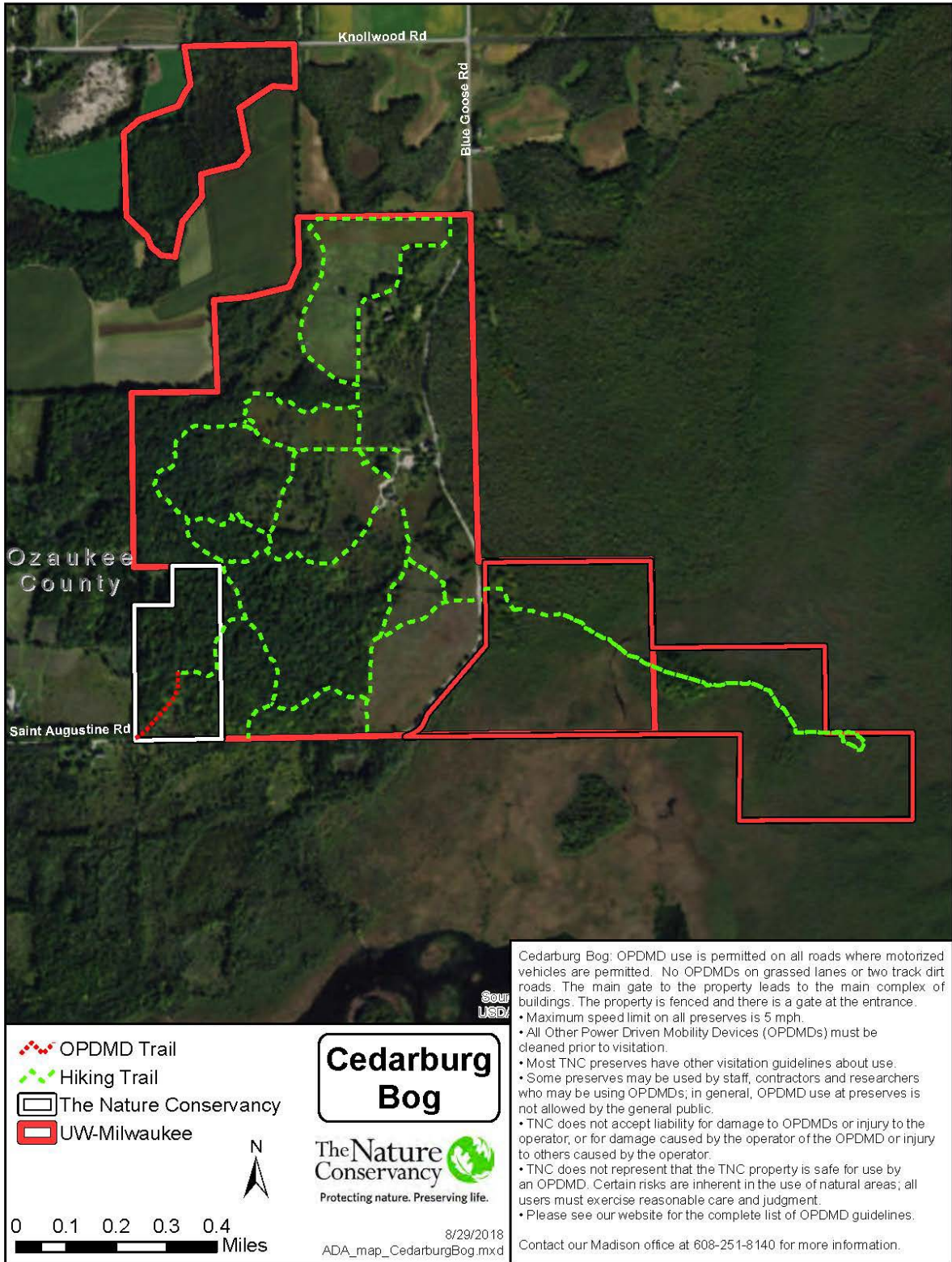


# Caroline Lake Map





# Cedarburg Bog Map



- - - OPDMD Trail  
- - - Hiking Trail  
  The Nature Conservancy  
  UW-Milwaukee

0 0.1 0.2 0.3 0.4  
 Miles

**Cedarburg Bog**

  
 The Nature Conservancy  
 Protecting nature. Preserving life.

8/29/2018  
 ADA\_map\_CedarburgBog.mxd

Cedarburg Bog: OPDMD use is permitted on all roads where motorized vehicles are permitted. No OPDMDs on grassed lanes or two track dirt roads. The main gate to the property leads to the main complex of buildings. The property is fenced and there is a gate at the entrance.

- Maximum speed limit on all preserves is 5 mph.
- All Other Power Driven Mobility Devices (OPDMDs) must be cleaned prior to visitation.
- Most TNC preserves have other visitation guidelines about use.
- Some preserves may be used by staff, contractors and researchers who may be using OPDMDs; in general, OPDMD use at preserves is not allowed by the general public.
- TNC does not accept liability for damage to OPDMDs or injury to the operator, or for damage caused by the operator of the OPDMD or injury to others caused by the operator.
- TNC does not represent that the TNC property is safe for use by an OPDMD. Certain risks are inherent in the use of natural areas; all users must exercise reasonable care and judgment.
- Please see our website for the complete list of OPDMD guidelines.

Contact our Madison office at 608-251-8140 for more information.

# Crooked Creek Map



Source: Esri, DigitalGlobe, GeoEye, Earthstar Geographics, CNES/Airbus DS, USDA, USGS, AeroGRID, IGN, and the GIS User Community

Crooked Creek: Use OPDMDs only on main, gravel driveway.

- Maximum speed limit on all preserves is 5 mph.
- All Other Power Driven Mobility Devices (OPDMDs) must be cleaned prior to visitation.
- Most TNC preserves have other visitation guidelines about use.
- Some preserves may be used by staff, contractors and researchers who may be using OPDMDs; in general, OPDMD use at preserves is not allowed by the general public.
- TNC does not accept liability for damage to OPDMDs or injury to the operator, or for damage caused by the operator of the OPDMD or injury to others caused by the operator.
- TNC does not represent that the TNC property is safe for use by an OPDMD. Certain risks are inherent in the use of natural areas; all users must exercise reasonable care and judgment.
- Please see our website for the complete list of OPDMD guidelines.

Contact our Mukwonago office at 262/642-7276 for more information and a gate lock combination.

- OPDMD Trails
- Hiking Trails
- Parking
- Preserve Boundary

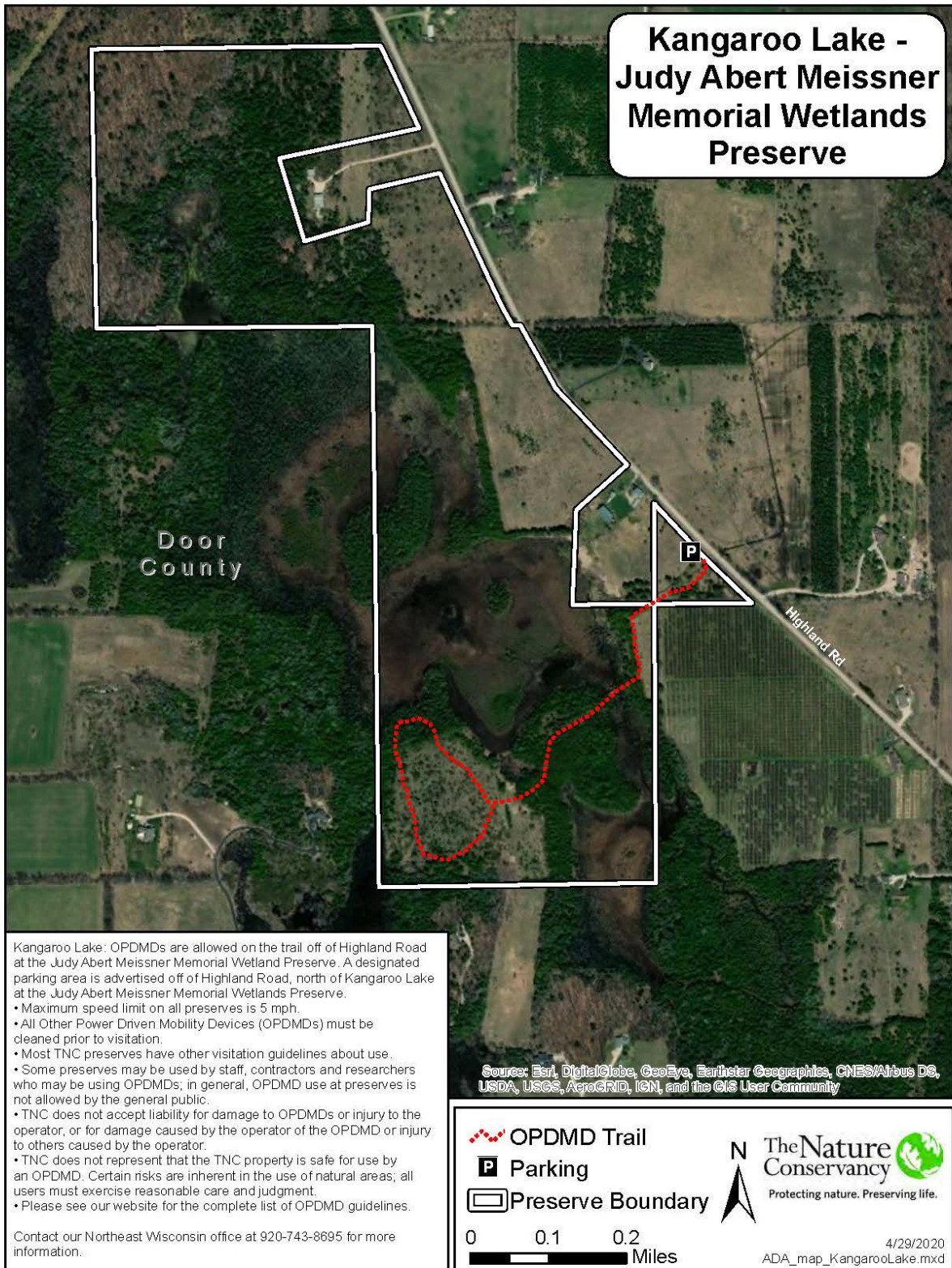
**The Nature Conservancy**  
Protecting nature. Preserving life.

**Crooked Creek**

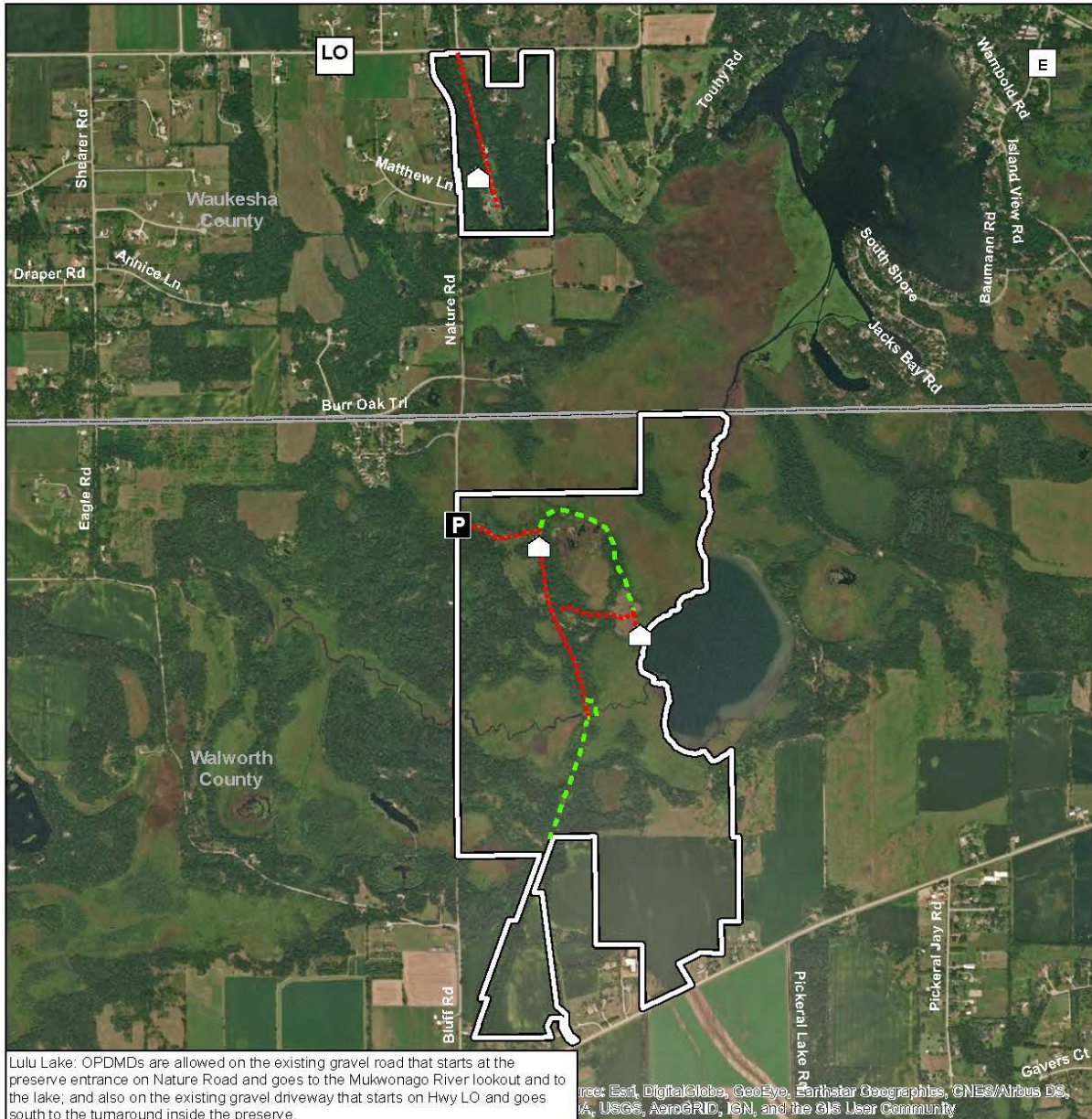
ADA\_map\_CrookedCreek.mxd  
8/29/2018

0 0.1 0.2 0.3 Miles

# Kangaroo Lake Map



# Lulu Lake Map



Lulu Lake: OPDMDs are allowed on the existing gravel road that starts at the preserve entrance on Nature Road and goes to the Mukwonago River lookout and to the lake; and also on the existing gravel driveway that starts on Hwy LO and goes south to the turnaround inside the preserve.

- Maximum speed limit on all preserves is 5 mph
- All Other Power Driven Mobility Devices (OPDMDs) must be cleaned prior to visitation.
- Most TNC preserves have other visitation guidelines about use.
- Some preserves may be used by staff, contractors and researchers who may be using OPDMDs; in general, OPDMD use at preserves is not allowed by the general public.
- TNC does not accept liability for damage to OPDMDs or injury to the operator, or for damage caused by the operator of the OPDMD or injury to others caused by the operator.
- TNC does not represent that the TNC property is safe for use by an OPDMD. Certain risks are inherent in the use of natural areas; all users must exercise reasonable care and judgment.
- Please see our website for the complete list of OPDMD guidelines.

Contact our Mukwonago office at 262-642-7276 for more information, a gate lock combination and to check on the condition of the trail.

Map data sources: Esri, DigitalGlobe, GeoEye, Earthstar Geographics, CNES/Airbus DS, USDA, USGS, AeroGRID, IGN, and the GIS User Community

- - - OPDMD Trails
- - - Hiking Trails
- P** Parking
- Building
- Preserve Boundary
- County Boundary

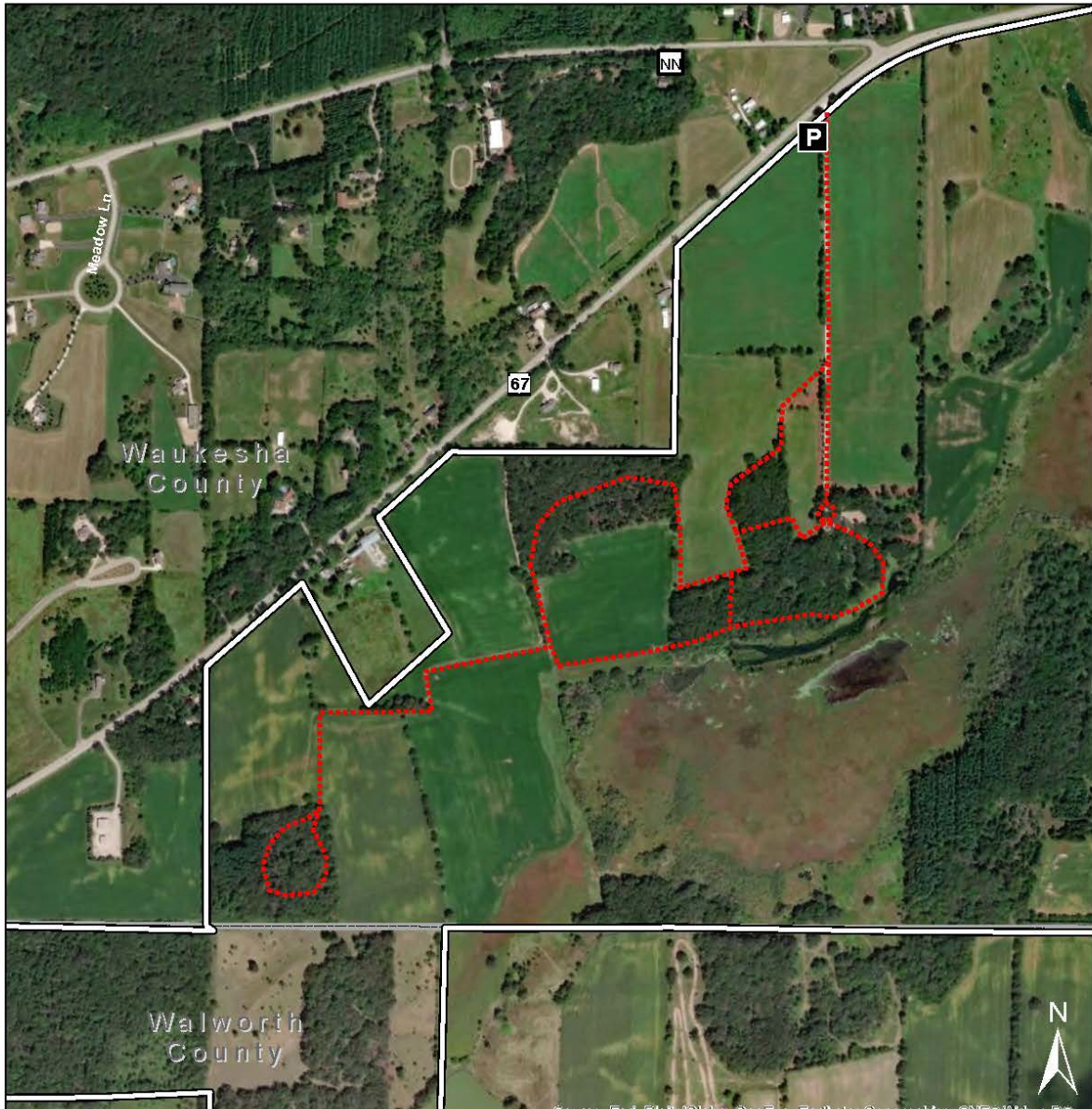
**Lulu Lake Preserve**

Protecting nature. Preserving life.

0 0.1 0.2 0.3 0.4 0.5 Miles

3/5/2020  
ADA\_map\_LuluLake.mxd

# Newell and Ann Meyer Nature Preserve Map



Source: Esri, DigitalGlobe, GeoEye, Earthstar Geographics, CNES/Airbus DS, USDA, USGS, AeroGRID, IGN, and the GIS User Community

- Meyer Preserve: OPDMDs are allowed on the preserve driveway and established trails (the marked Priebe Family trail).
- Maximum speed limit on all preserves is 5 mph.
  - All Other Power Driven Mobility Devices (OPDMDs) must be cleaned prior to visitation.
  - Most TNC preserves have other visitation guidelines about use.
  - Some preserves may be used by staff, contractors and researchers who may be using OPDMDs; in general, OPDMD use at preserves is not allowed by the general public.
  - TNC does not accept liability for damage to OPDMDs or injury to the operator, or for damage caused by the operator of the OPDMD or injury to others caused by the operator.
  - TNC does not represent that the TNC property is safe for use by an OPDMD. Certain risks are inherent in the use of natural areas; all users must exercise reasonable care and judgment.
  - Please see our website for the complete list of OPDMD guidelines.

Contact our Mukwonago office at 262/642-7276 for more information, a gate lock combination and to check on the condition of the trail.

- OPDMD Trails
- Parking
- Preserve Boundary
- County Boundary

## Newell and Ann Meyer Nature Preserve

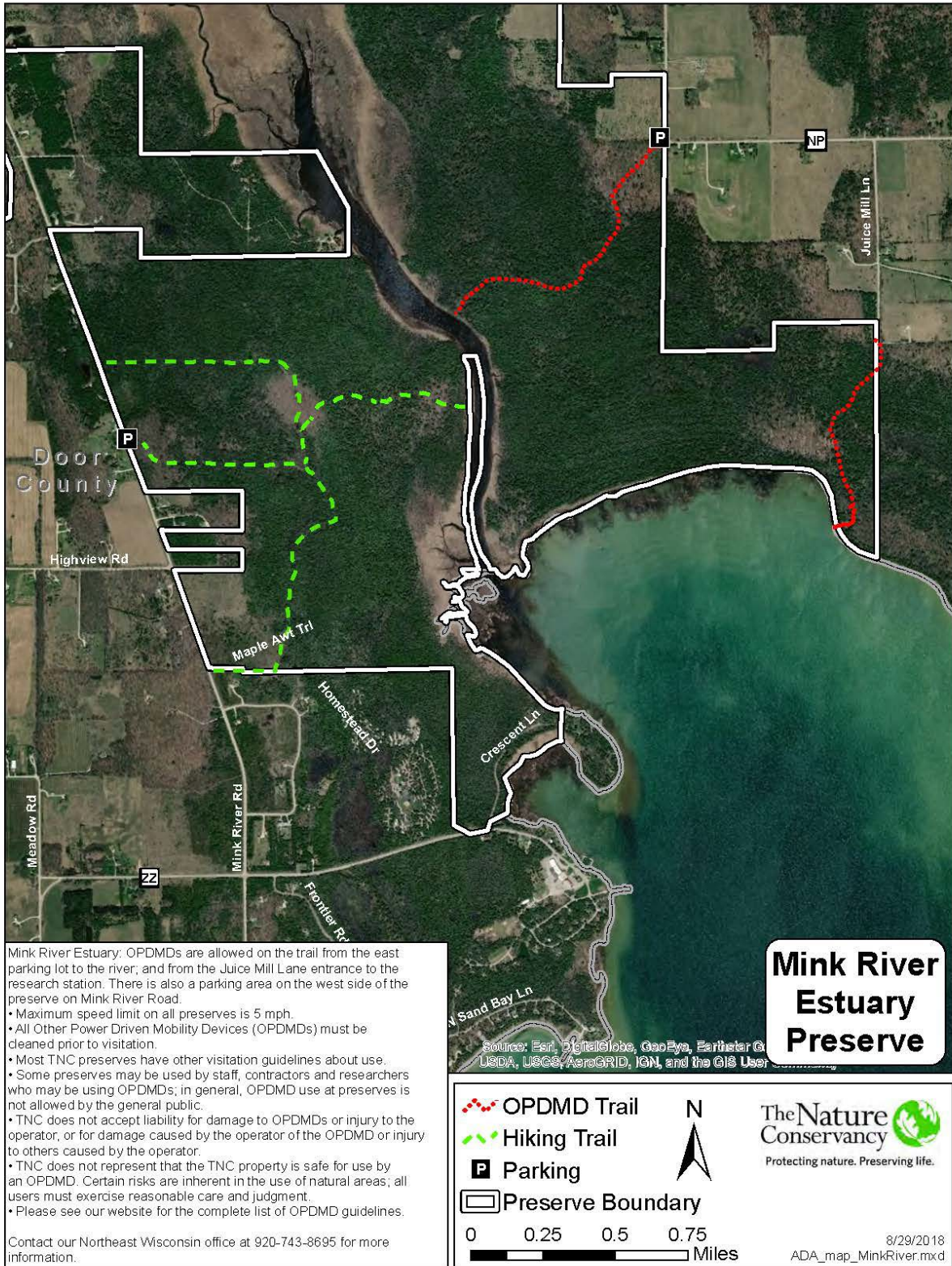
**The Nature Conservancy**

Protecting nature. Preserving life.

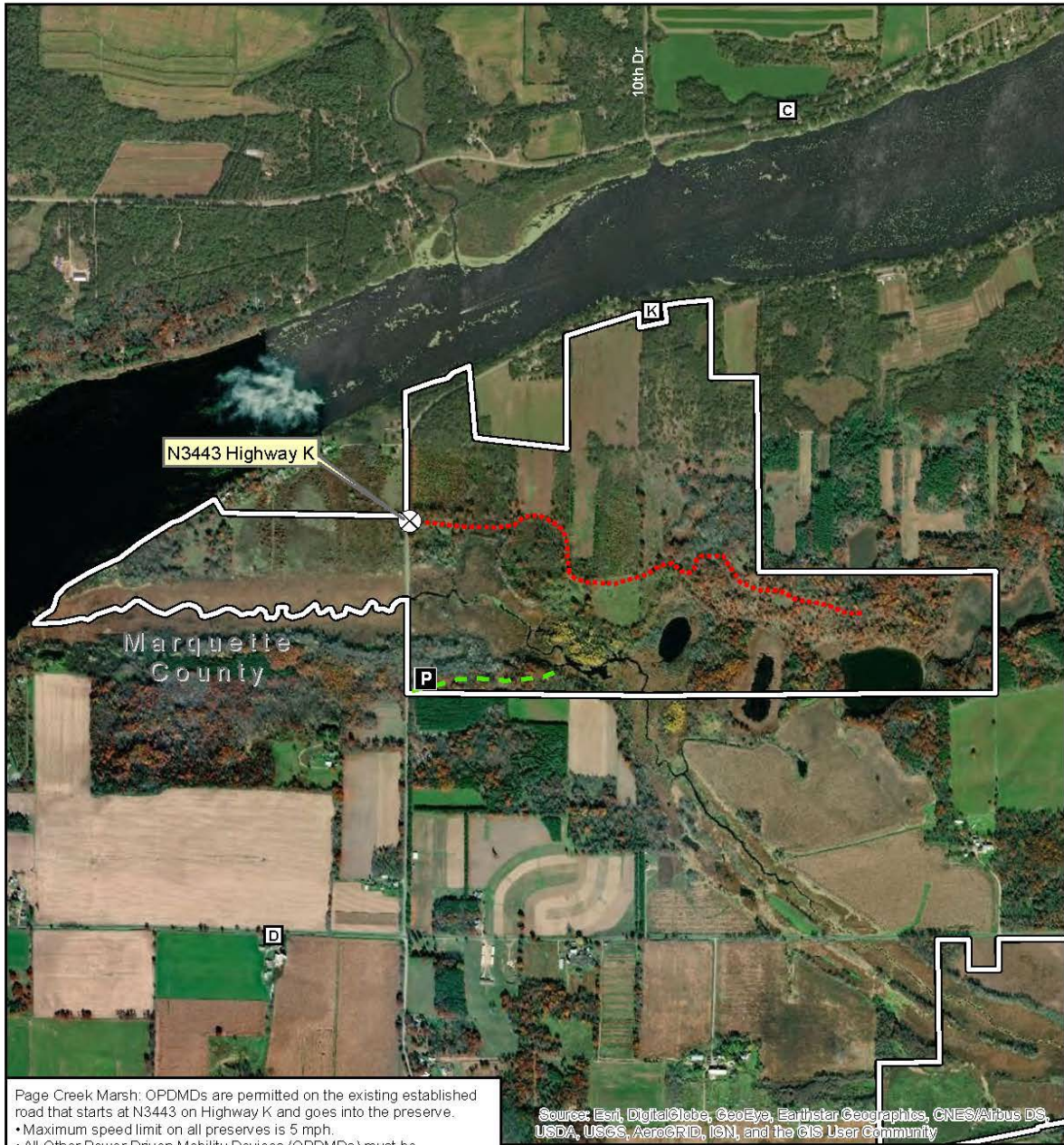
0 0.1 0.2 0.3 0.4 Miles

8/29/2018  
ADA\_map\_Meyer.mxd

# Mink River Map



Page Creek Marsh Map



Page Creek Marsh: OPDMDs are permitted on the existing established road that starts at N3443 on Highway K and goes into the preserve.

- Maximum speed limit on all preserves is 5 mph.
- All Other Power Driven Mobility Devices (OPDMDs) must be deaned prior to visitation.
- Most TNC preserves have other visitation guidelines about use.
- Some preserves may be used by staff, contractors and researchers who may be using OPDMDs; in general, OPDMD use at preserves is not allowed by the general public.
- TNC does not accept liability for damage to OPDMDs or injury to the operator, or for damage caused by the operator of the OPDMD or injury to others caused by the operator.
- TNC does not represent that the TNC property is safe for use by an OPDMD. Certain risks are inherent in the use of natural areas; all users must exercise reasonable care and judgment.
- Please see our website for the complete list of OPDMD guidelines.

Contact our Madison office at 608-251-8140 for more information and a gate lock combination.

Source: Esri, DigitalGlobe, GeoEye, Earthstar Geographics, CNES/Airbus DS, USDA, USGS, AeroGRID, IGN, and the GIS User Community

- ⋯ OPDMD Trail
- - - Hiking Trail
- X Access Gate
- P Parking
- Preserve Boundary

N

**Page Creek Marsh**

The Nature Conservancy

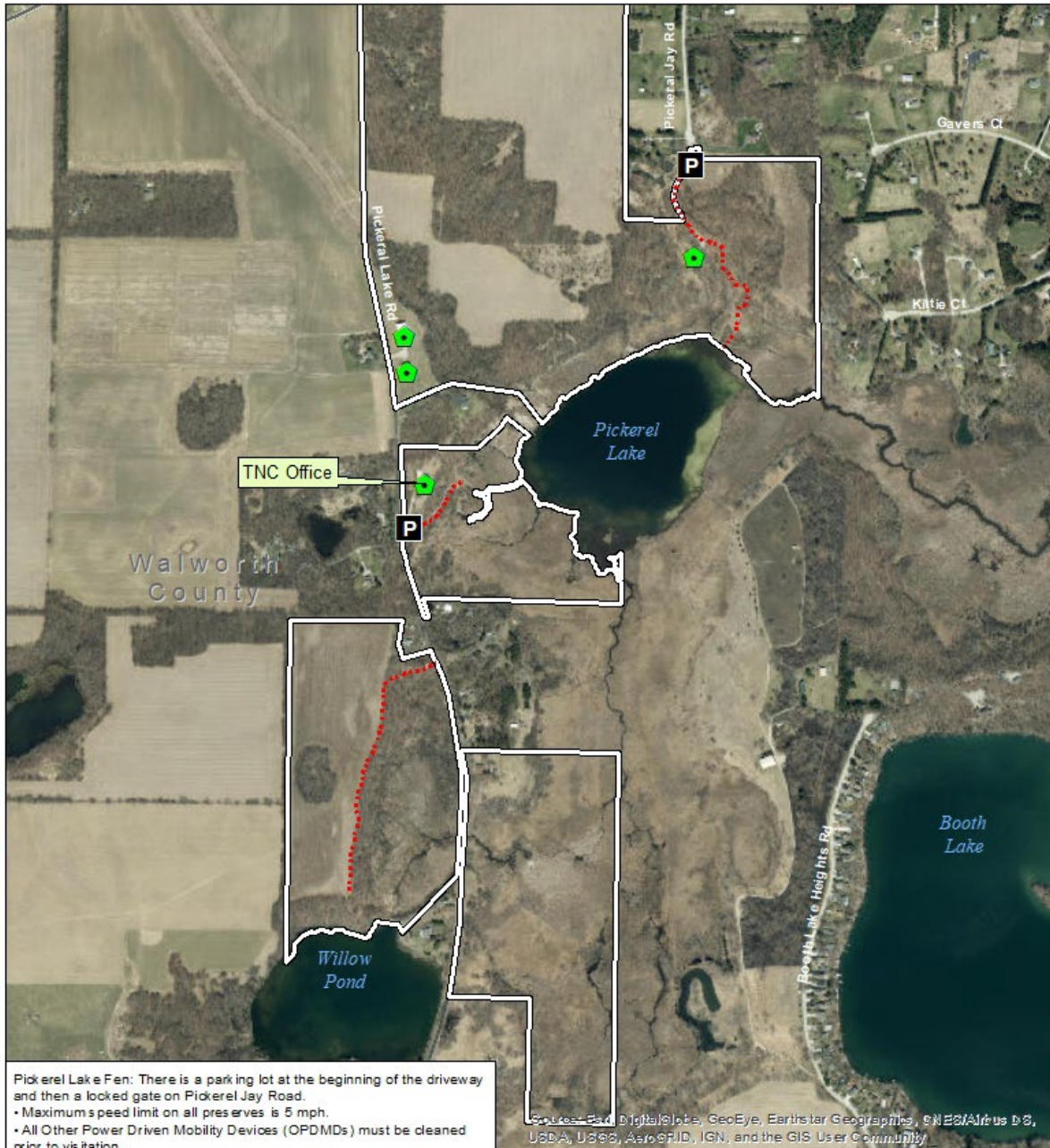
Protecting nature. Preserving life.

0    0.2    0.4    0.6

————— Miles

8/29/2018  
ADA\_map\_PageCreek.mxd

# Pickerel Lake Fen Map



Pickerel Lake Fen: There is a parking lot at the beginning of the driveway and then a locked gate on Pickerel Jay Road.

- Maximum speed limit on all preserves is 5 mph.
- All Other Power Driven Mobility Devices (OPDMDs) must be cleaned prior to visitation.
- Most TNC preserves have other visitation guidelines about use.
- Some preserves may be used by staff, contractors and researchers who may be using OPDMDs; in general, OPDMD use at preserves is not allowed by the general public.
- TNC does not accept liability for damage to OPDMDs or injury to the operator, or for damage caused by the operator of the OPDMD or injury to others caused by the operator.
- TNC does not represent that the TNC property is safe for use by an OPDMD. Certain risks are inherent in the use of natural areas; all users must exercise reasonable care and judgment.
- Please see our website for the complete list of OPDMD guidelines.

Contact our Mukwonago office at 262/642-7276 for more information, a gate lock combination and to check on the condition of the trail.

- ⋯ ADA Accessible Trails
- P Parking
- ⬠ structures
- Preserve Boundary

N

## Pickerel Lake Fen

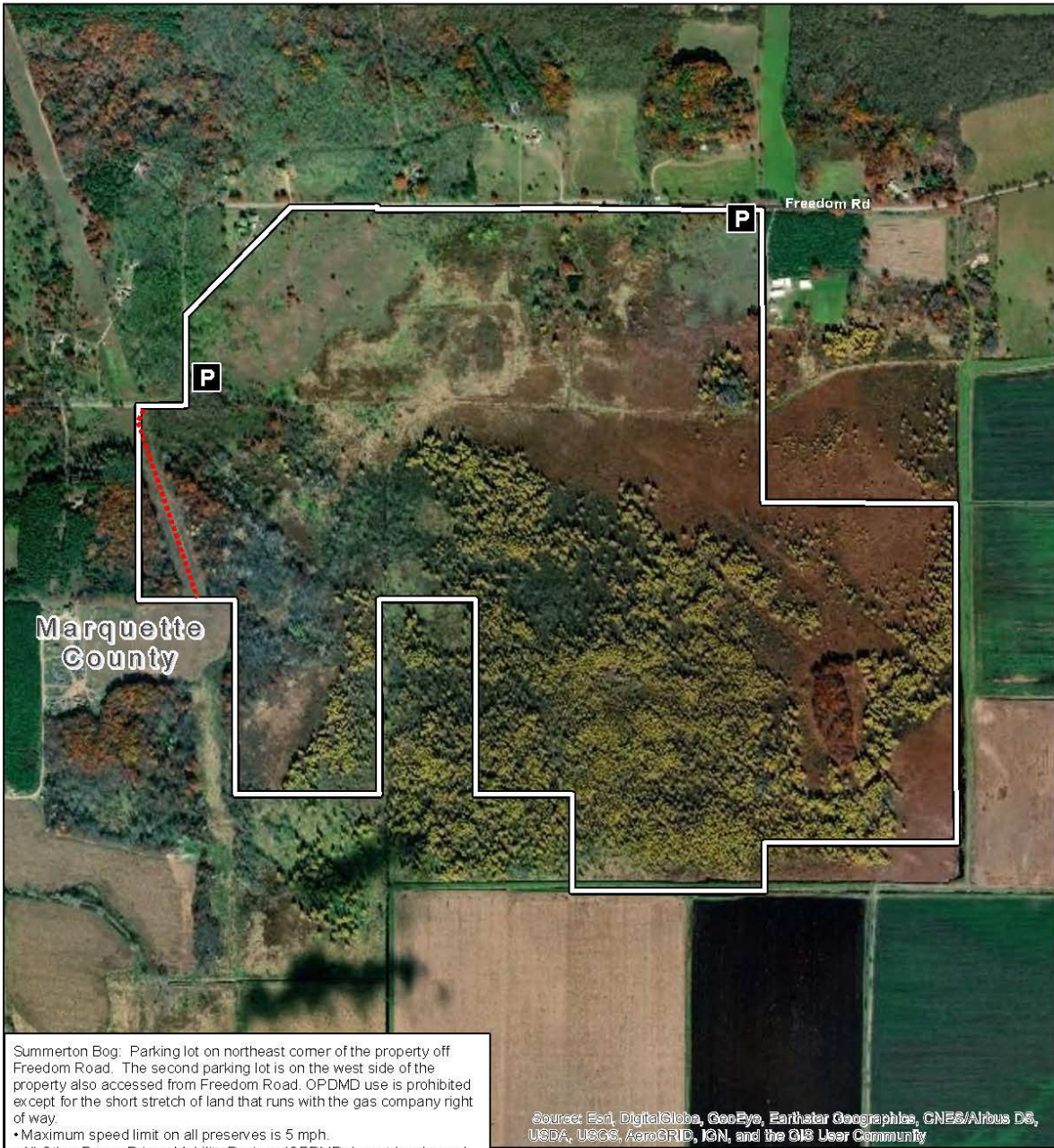
The Nature Conservancy

9/21/2022  
ADA\_map\_PickerelLakeFen.mxd

0 0.1 0.2 0.3 Miles



# Summerton Bog Map



Summerton Bog: Parking lot on northeast corner of the property off Freedom Road. The second parking lot is on the west side of the property also accessed from Freedom Road. OPDMD use is prohibited except for the short stretch of land that runs with the gas company right of way.

- Maximum speed limit on all preserves is 5 mph.
- All Other Power Driven Mobility Devices (OPDMDs) must be cleaned prior to visitation.
- Most TNC preserves have other visitation guidelines about use.
- Some preserves may be used by staff, contractors and researchers who may be using OPDMDs; in general, OPDMD use at preserves is not allowed by the general public.
- TNC does not accept liability for damage to OPDMDs or injury to the operator, or for damage caused by the operator of the OPDMD or injury to others caused by the operator.
- TNC does not represent that the TNC property is safe for use by an OPDMD. Certain risks are inherent in the use of natural areas; all users must exercise reasonable care and judgment.
- Please see our website for the complete list of OPDMD guidelines.

Contact our Madison office at 608-251-8140 for more information.

OPDMD Trail

Parking

Preserve Boundary

**Summerton Bog**

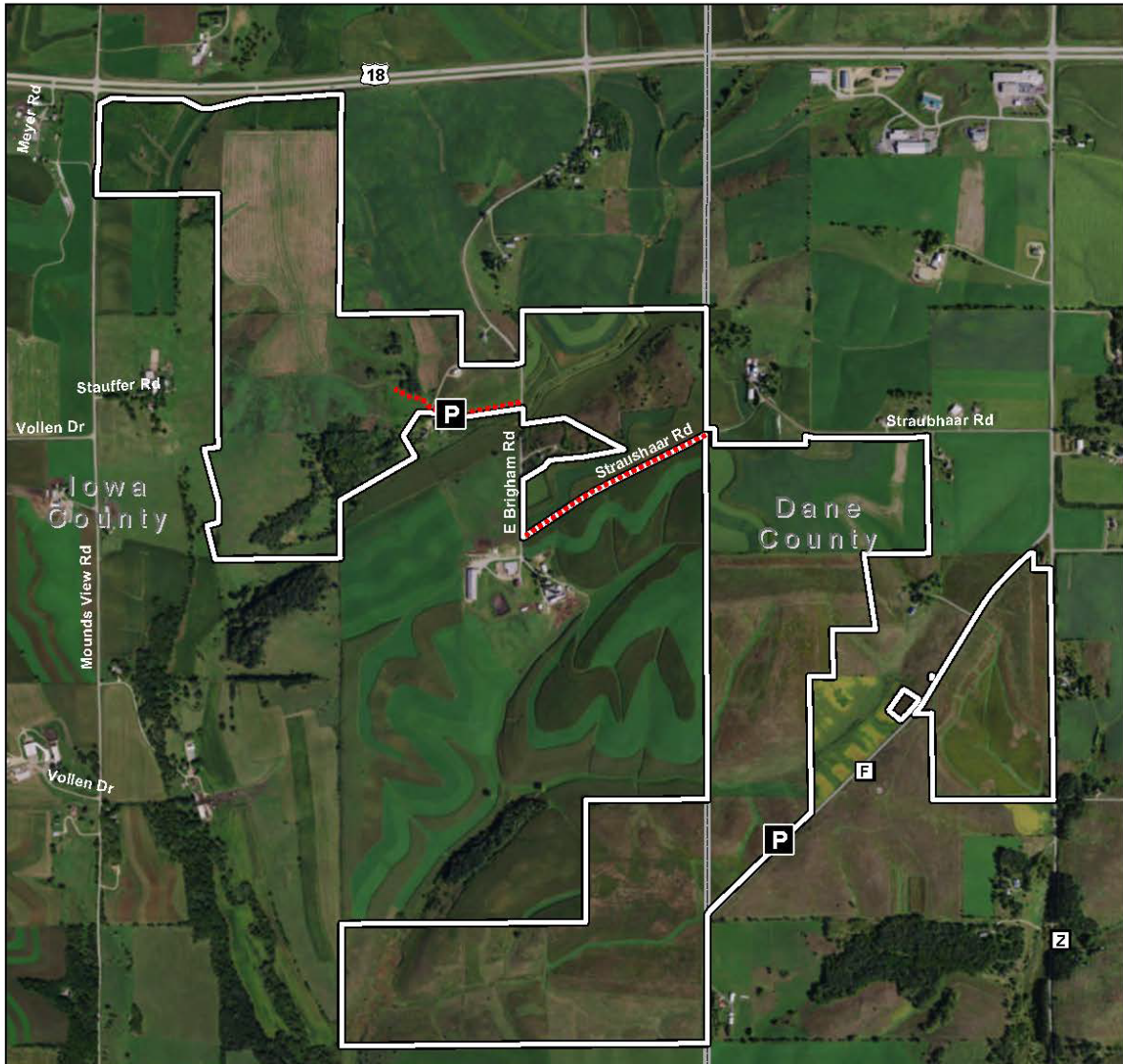
**The Nature Conservancy**

Protecting nature. Preserving life.

10/29/2018  
ADA\_map\_SummertonBog.mxd

0 0.1 0.2 0.3 0.4 Miles

# Thomson Memorial Prairie Map



Thomson Memorial Prairie: OPDMDs are allowed on established farm lanes and maintained mowed paths. The official preserve entrance is located on Hwy F where we have a small parking area and an informational sign. There is a second preserve entrance and designated parking area off East Brigham Road.

- Maximum speed limit on all preserves is 5 mph.
- All Other Power Driven Mobility Devices (OPDMDs) must be cleaned prior to visitation.
- Most TNC preserves have other visitation guidelines about use.
- Some preserves may be used by staff, contractors and researchers who may be using OPDMDs; in general, OPDMD use at preserves is not allowed by the general public.
- TNC does not accept liability for damage to OPDMDs or injury to the operator, or for damage caused by the operator of the OPDMD or injury to others caused by the operator.
- TNC does not represent that the TNC property is safe for use by an OPDMD. Certain risks are inherent in the use of natural areas; all users must exercise reasonable care and judgment.
- Please see our website for the complete list of OPDMD guidelines.

Contact our Madison office at 608-251-8140 for more information and a gate lock combination.

Source: Esri, DigitalGlobe, GeoEye, Earthstar Geographics, CNES/Airbus DS, USDA, USGS, AeroGRID, IGN, and the GIS User Community

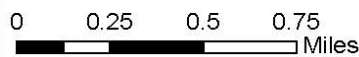
- OPDMD Trail
- Parking
- Preserve Boundary
- County Boundary



**Thomson  
Memorial  
Prairie**



Protecting nature. Preserving life.



8/29/2018  
ADA\_map\_Thompson.mxd